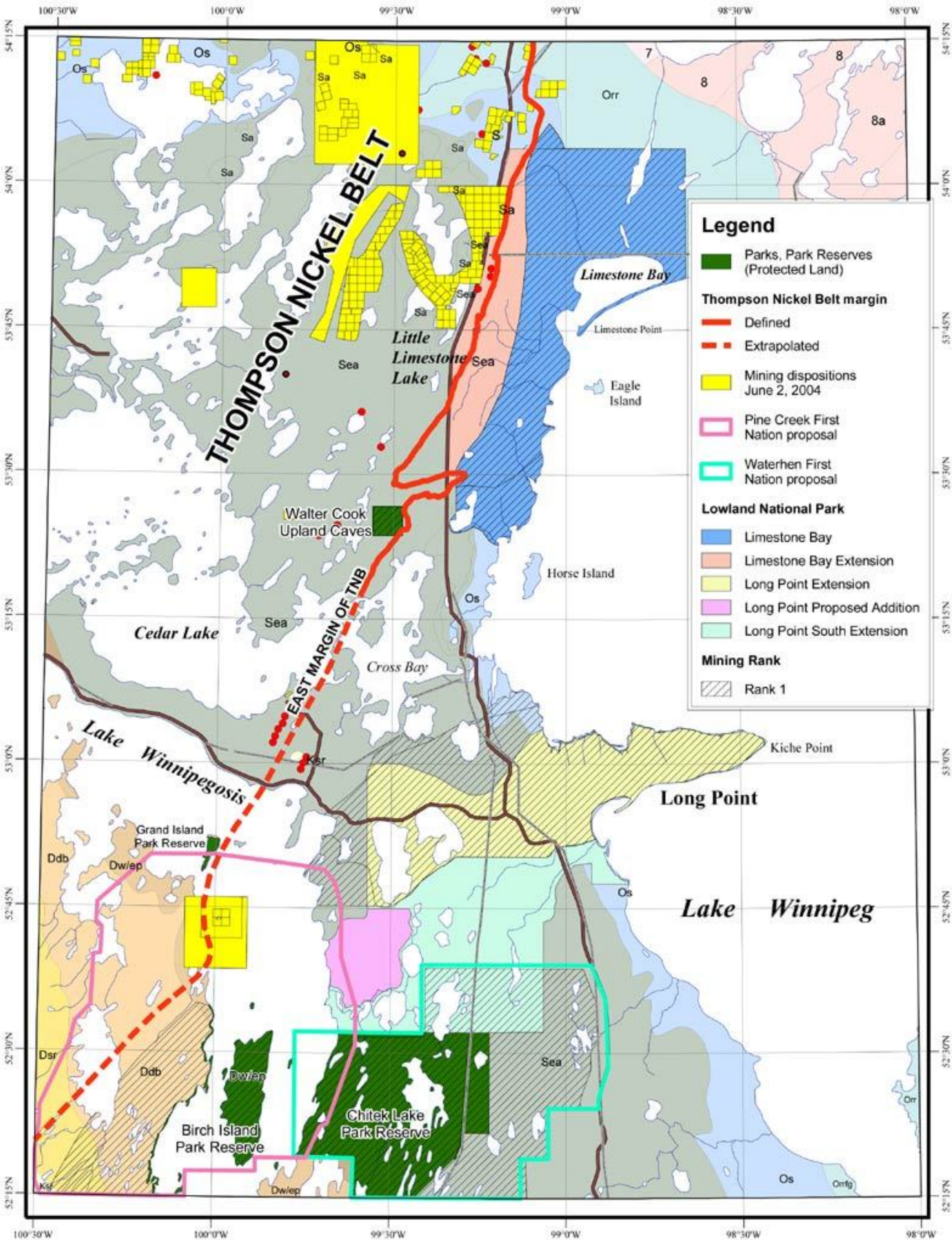


# Long Point and Limestone Bay Rank 1 ASI's (Proposed Lowlands National Park)



### Legend

- Parks, Park Reserves (Protected Land)
- Thompson Nickel Belt margin**
  - Defined
  - Extrapolated
- Mining dispositions June 2, 2004
- Pine Creek First Nation proposal
- Waterhen First Nation proposal
- Lowland National Park**
  - Limestone Bay
  - Limestone Bay Extension
  - Long Point Extension
  - Long Point Proposed Addition
  - Long Point South Extension
- Mining Rank**
  - Rank 1

## Geological Units

<b>Cretaceous</b>	<span style="display:inline-block; width:15px; height:15px; background-color:lightgrey; border:1px solid black;"></span> Sa Atikameg Formation
<span style="display:inline-block; width:15px; height:15px; background-color:yellow; border:1px solid black;"></span> Ksr Swan River Formation	<span style="display:inline-block; width:15px; height:15px; background-color:lightgrey; border:1px solid black;"></span> Sea East Arm Formation
<b>Devonian</b>	<b>Ordovician</b>
<span style="display:inline-block; width:15px; height:15px; background-color:yellow; border:1px solid black;"></span> Dsr Souris River Formation	<span style="display:inline-block; width:15px; height:15px; background-color:lightblue; border:1px solid black;"></span> Orrfg Red River Formation; Fort Garry Member
<span style="display:inline-block; width:15px; height:15px; background-color:orange; border:1px solid black;"></span> Ddb Dawson Bay Formation	<span style="display:inline-block; width:15px; height:15px; background-color:lightblue; border:1px solid black;"></span> Orr Red River Formation
<span style="display:inline-block; width:15px; height:15px; background-color:lightbrown; border:1px solid black;"></span> Da Ashern Formation	<span style="display:inline-block; width:15px; height:15px; background-color:lightblue; border:1px solid black;"></span> Os Stonewall Formation
<span style="display:inline-block; width:15px; height:15px; background-color:lightbrown; border:1px solid black;"></span> Dw/ep Winnipegosis and Elm Point formations	<b>Precambrian</b>
<b>Silurian</b>	<span style="display:inline-block; width:15px; height:15px; background-color:lightpink; border:1px solid black;"></span> 8 Tonalite
<span style="display:inline-block; width:15px; height:15px; background-color:lightgrey; border:1px solid black;"></span> S Interlake Group	<span style="display:inline-block; width:15px; height:15px; background-color:lightpink; border:1px solid black;"></span> 8a Tonalite gneiss

7 Felsic granulite

Ultramafic occurrence

### Infrastructure

Power transmission line

Road

